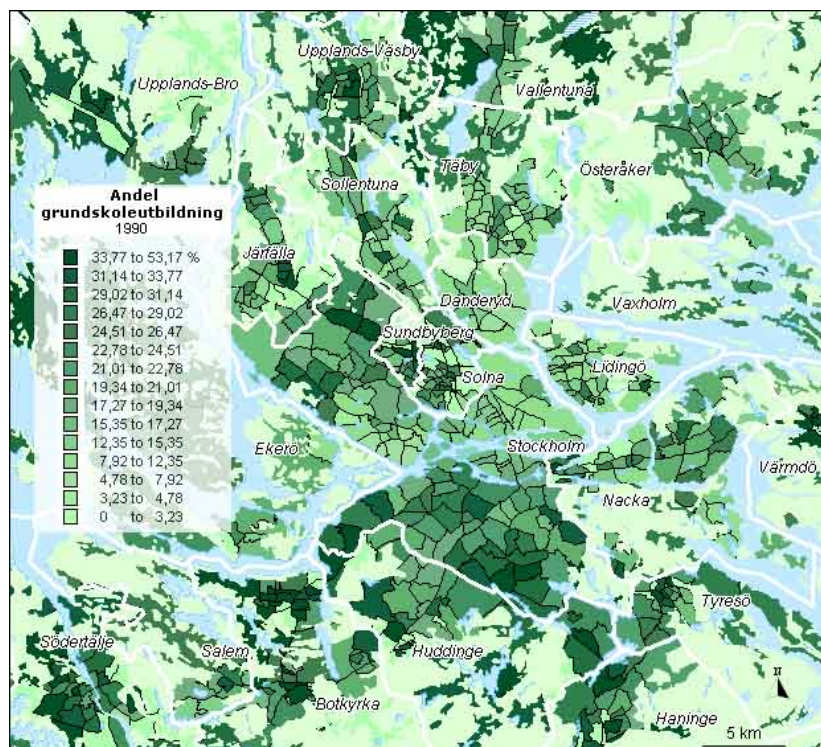
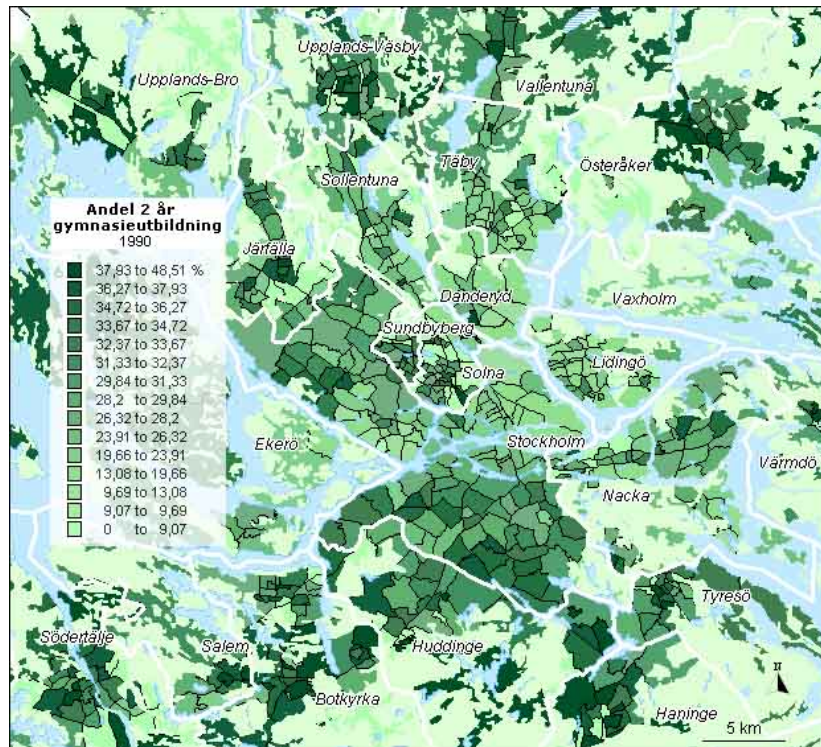


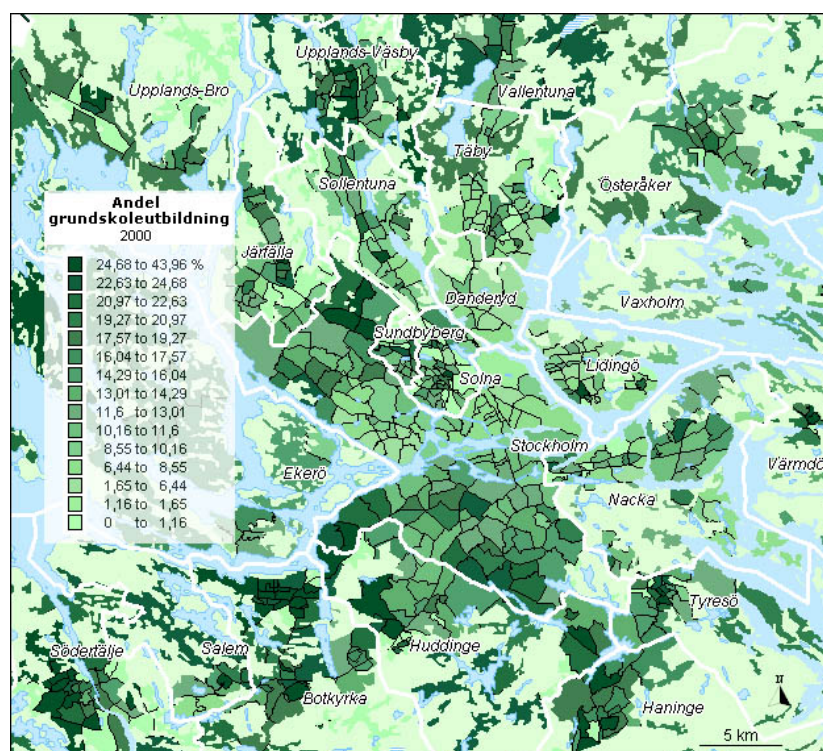
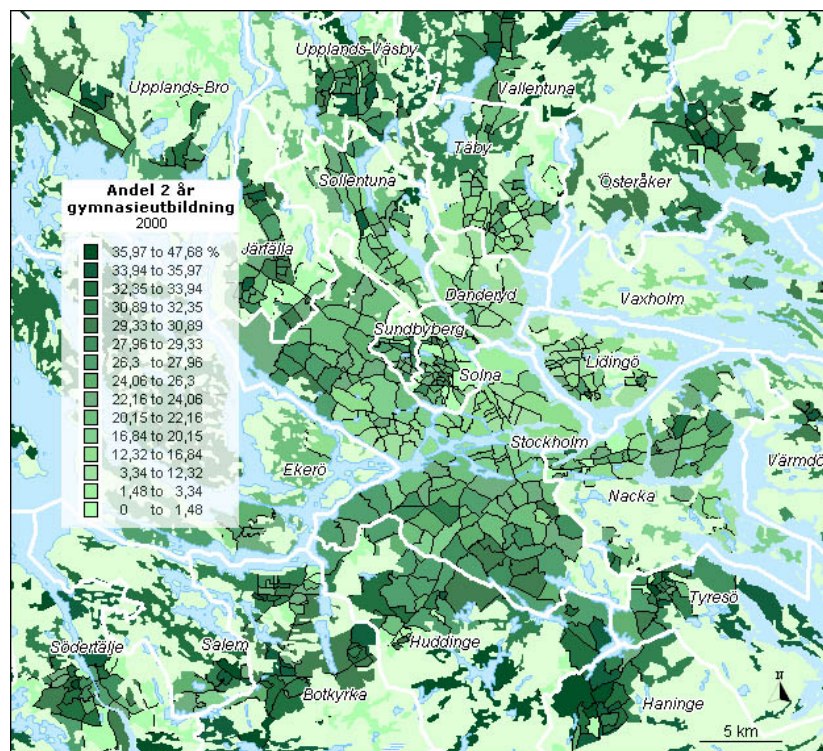
This document is an historical remnant. It belongs to the collection Skeptron Web Archive (included in Donald Broady's archive) that mirrors parts of the public Skeptron web site as it appeared on 31 December 2019, containing material from the research group Sociology of Education and Culture (SEC) and the research programme Digital Literature (DL). The contents and file names are unchanged while character and layout encoding of older pages has been updated for technical reasons. Most links are dead. A number of documents of negligible historical interest as well as the collaborators' personal pages are omitted.

The site's internet address was since Summer 1993 www.nada.kth.se/~broady/ and since 2006 www.skeptron.uu.se/broady/sec/.

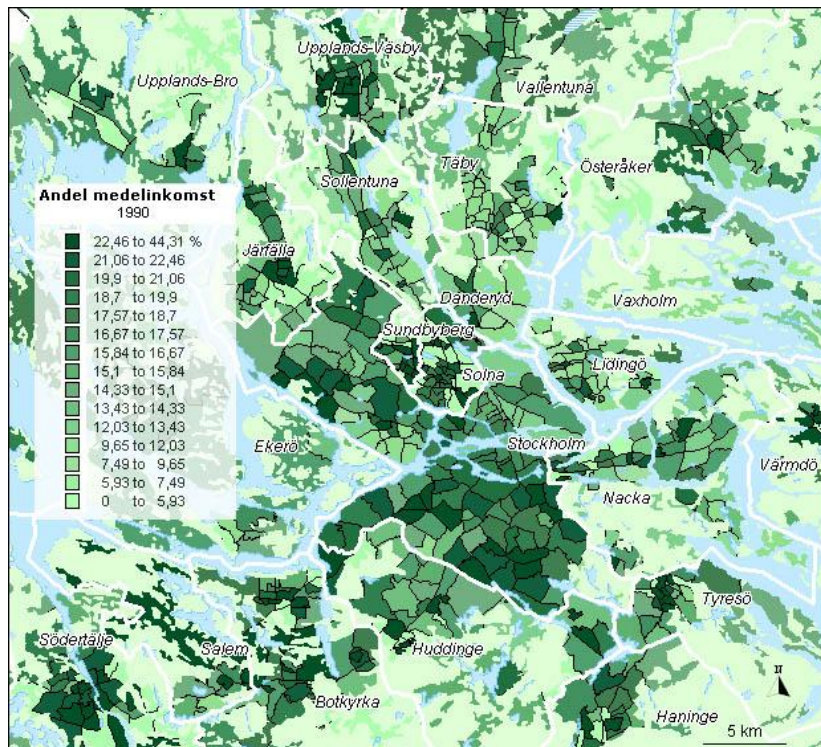
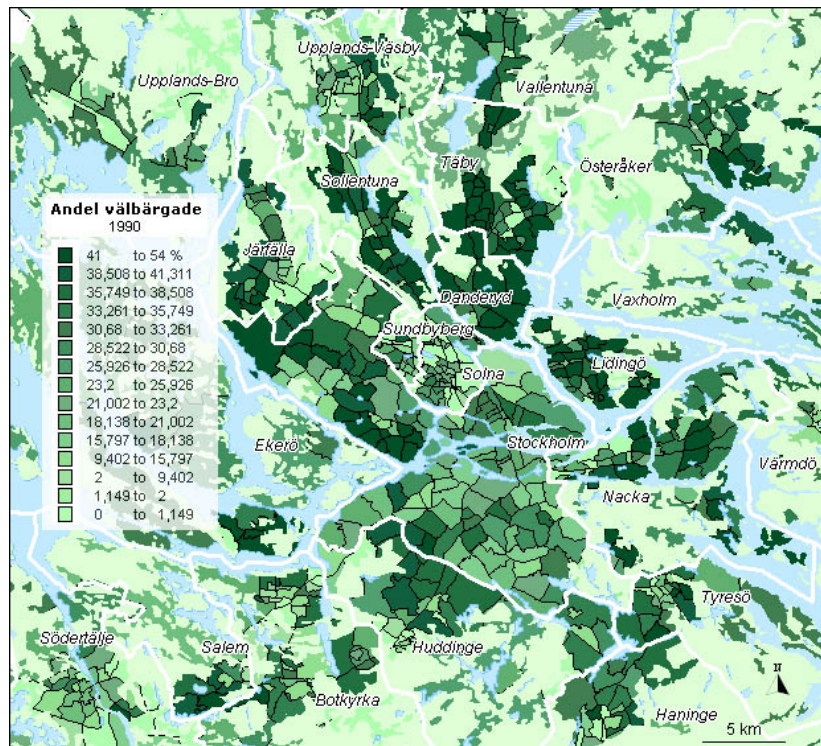
Karta 31. Utbildning 1990, Stockholms län, SAMS-områden, 2 årigt gymnasium & Grundskola.



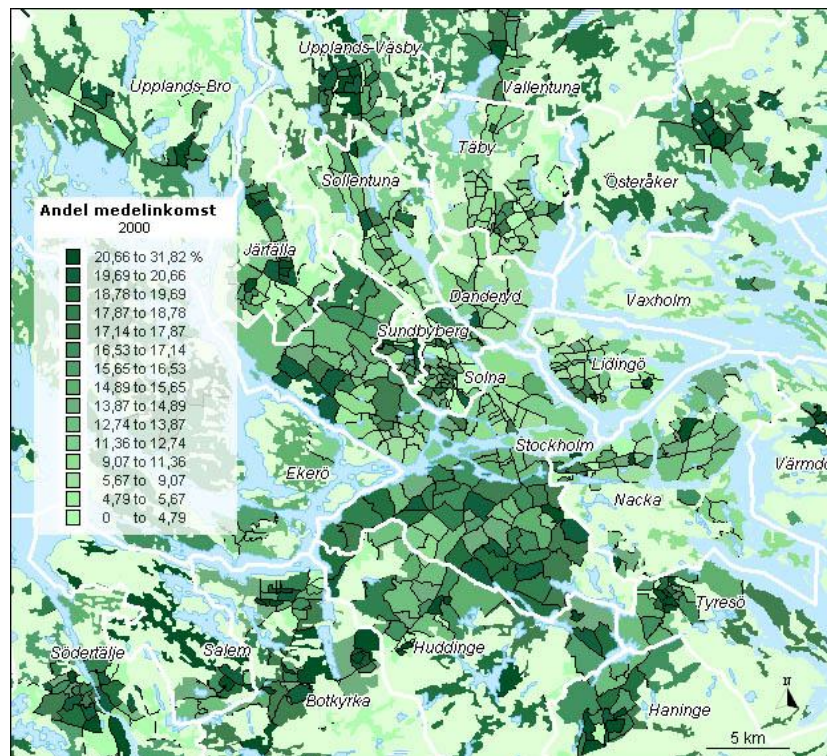
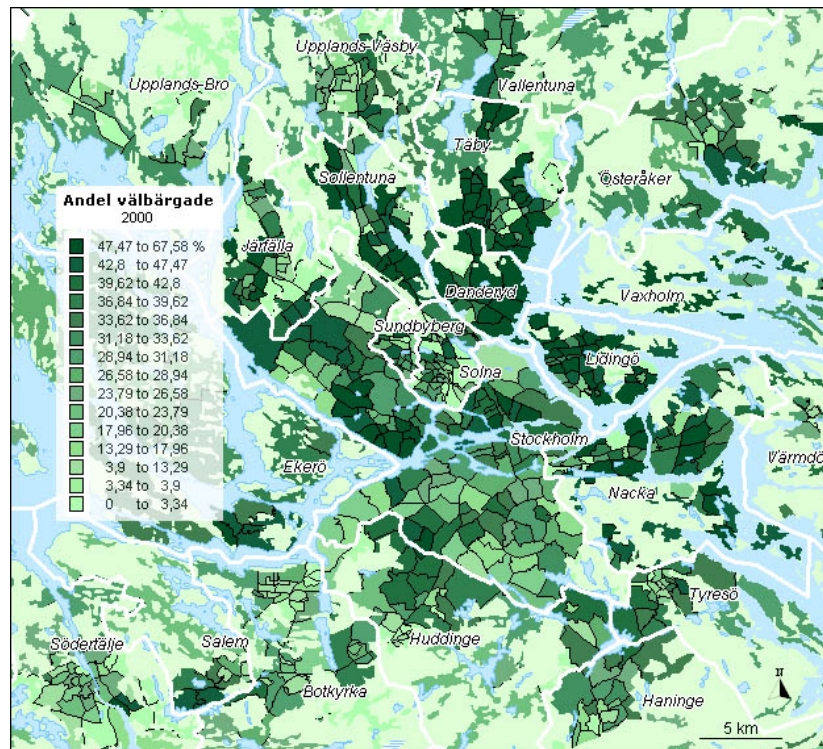
Karta 32. Utbildning 2000, Stockholms län, SAMS-områden, 2 årigt gymnasium & Grundskola.



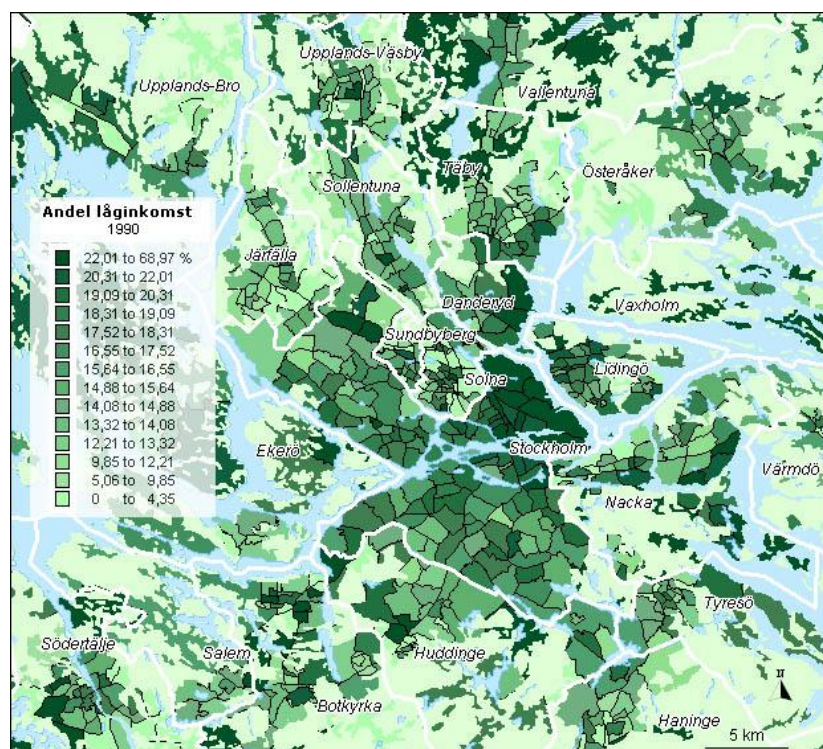
Karta 33. Inkomst 1990, Stockholms län, SAMS-områden, Vålbärgade & Medelinkomst.



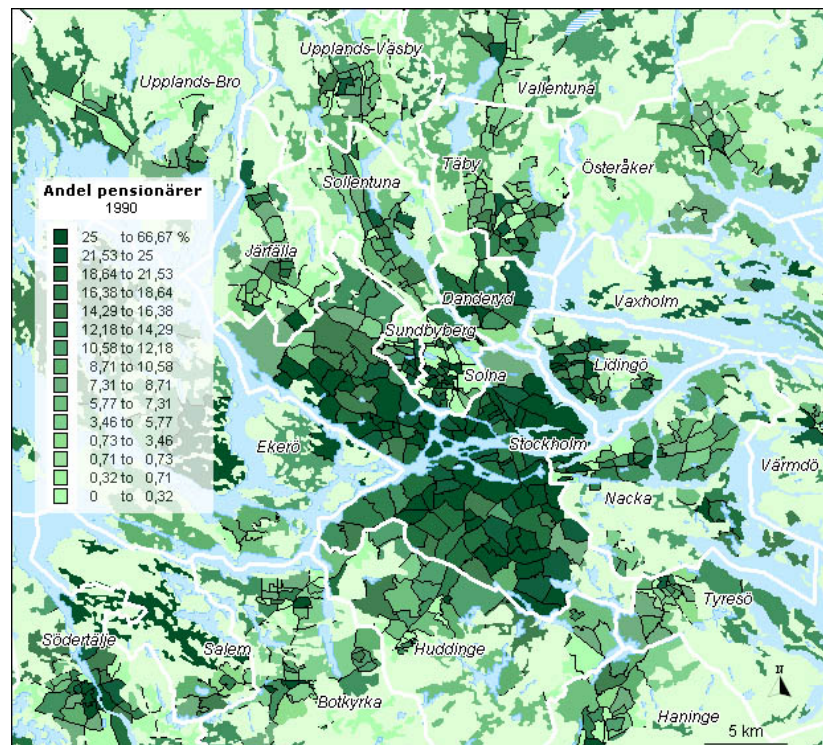
Karta 34. Inkomst 2000, Stockholms län, SAMS-områden, Vålbärgade & Medelinkomst.



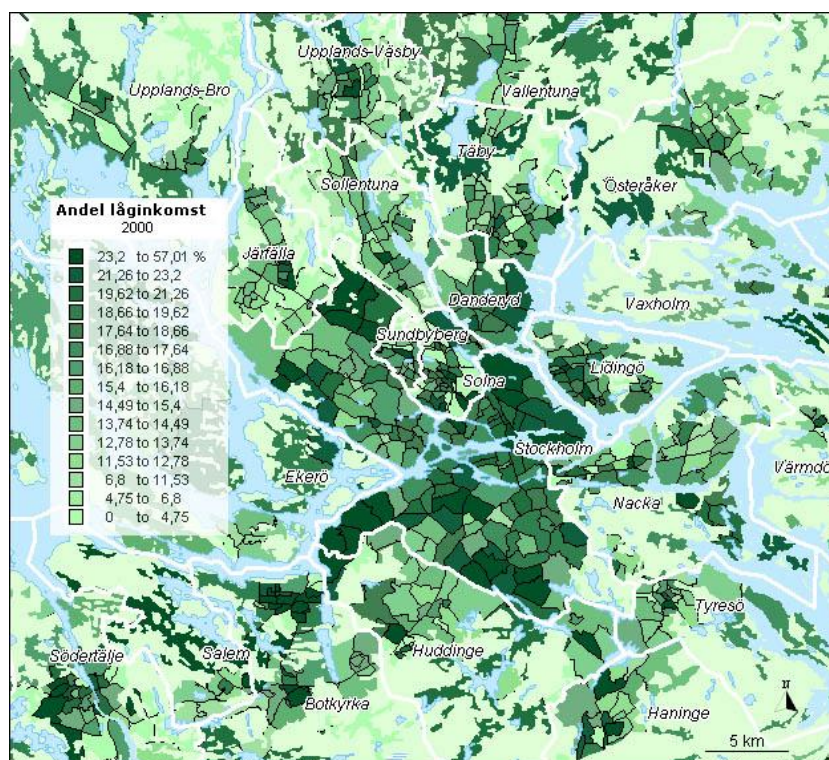
Karta 35. Inkomst 1990, Stockholms län, SAMS-områden, Låginkomst.



Karta 36. Demografi 1990, Stockholms län, SAMS-områden, Pensionärer.



Karta 37. Inkomst 2000, Stockholms län, SAMS-områden, Låginkomst.



Karta 38. Demografi 2000, Stockholms län, SAMS-områden, Pensionärer.

